

LMS-41H-2U

Rugged Fanless Server

Up to 128 GB RAM
8-Core Intel Xeon

Description:

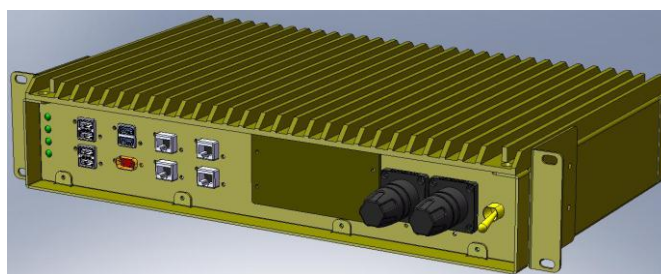
The OPTOKON introduces highly versatile mobile Server in a single low-SWaP device. As the center of the mobile data network, it provides an integrated and versatile server for military, public safety and C4ISR systems.

The system is equipped with power full Intel® Xeon® processor witch delivers exceptional value and unmatched performance density per watt in an SoC package, up to 128 GB RAM, two or four removable Storage discs SSD and wide range of connection ports, both fiber optic and copper wires. The LMS is available in rugged boxes to fill all demands on communication system used in harsh environmental conditions and Extended operating temperature (-20 to 60°C). Fiber optic ports are equipped with rugged HMA connectors operated according to "Expanded Beam" technology, which allow to use all advantages of high speed data transmission in field conditions.

The innovative design ensures the capability for deployment in the toughest environments where high performance and total reliability are critical.

Primary features

- Robust compact design resistant to harsh environmental conditions and rough handling
- Intel® Xeon® processor D-1541
- Up to 128 GB RAM ECC DDR4 2400 MHz
- On board SSD disc M.2 NVMe and 2x Dual removable SSD 2.5
- 2x 10/100/1000Base-T ports and 2x 1000Base-X FO uplinks
- Rugged MRJ connectors series
- Linux-based router solutions supports a multitude of routing protocols



LMS-41-2U/MRJ

Product Specifications

- Intel® Xeon® processor D-1541 (8-Core, 16 Threads, 12 MB Cache, 2.1-2.7 GHz)
- HW Notifications sent via email and SNMP traps
- Monitors for CPU Cores, System level control

System memory

- Up to 128 GB ECC RDIMM DDR4 2400 MHz or 128 GB ECC/non-ECC UDIMM in 4 sockets

Solid State Drives

- 1x M.2 NVMe PCI-E 3.0 x4, M Key 2242/2280 up to 480 MB
- 2x Dual removable 2.5" SSD Drive Trayless Hot Swap SATA Mobile Rack
- SATA3 (6 Gbps); RAID 0,1,5,10 RSTe up to 4x 1 TB
- iSMART disk health monitoring
- iData Guard for abnormal power failure

Management and monitoring

- KVM with dedicated LAN, Support for Intelligent Platform Management Interface v2.0 with virtual media over LAN and KVM-over-LAN
- Hardware Monitoring (temperature, voltage, power failure, power consumption, disk health, and memory health)

Input / Output

- Panel Mount Receptacle
 - 2x FO HMA
 - 2x GbE RJ-45
 - 1x KVM with dedicated LAN RJ-45
 - 2x USB 3.0
 - 4x USB 2.0
 - 1x RS232
 - Video VGA port

Power consumption

- Power input 10.5-36 VDC
 - Nominal conditions: 65 W
 - Maximum load: 95 W

EMC Standards According to MIL-STD-461G

Detailed specifications

OS Compatibility Chart (SATA AHCI mode)

- Windows 7 SP1, Win 8 Enterprise, Win 10
- Fedora 22, 23
- SuSE SLES 11 SP4
- Ubuntu 14.04.3(4) LTS, Ubuntu 14.10 (15.10)
- Oracle Linux 7.2
- FreeBSD 10.1(2), FreeBSD 11
- CentOS 7.0, CentOS 7.2
- VMware ESXi 5.5 U2, VMware ESXi 6.0 (U1a)
- Citrix XenServer 6.5 SP1

Front Control Panel LED indicators

- PWR LED
- HDD SATA LED

- Fail Motherboard LED (provides warnings of overheating, fan or power failure)
- NIC1 Activity LED (Gbit LAN1)
- NIC2 Activity LED (Gbit LAN2)

Environmental

- Temperature operating: -20 to +60°C
- Storage Temperature: -40 to +85°C
- Humidity: 5% to 95%
- Cooling Passive
- Fulfills MIL-STD-810G, IP 65 protection
- Dimensions: 430 x 275 x 88 mm (W x D x H)
- Weight: 9.5 kg

Ordering information

LMS	-	41H	-	X	X	X	X	-	YY	YY	-	X	
		Intel® Xeon® processor		On board M.2 NVMe SSD	1st & 2nd SSD SATA	3rd & 4th SSD SATA	System DDR4 RAM		1st & 2nd GbE ports Fiber optic/metalic	Fiber distance		No. of 1GbE ports (incl. FO)	
	41	D-1541		0	-	0	-		CT	Metallic 1000Base-T RJ-45		4	4x ports
				1	240 GB	1	256 GB	1	M5	MM 50/125 μm	02	2 km (MM)	
				2	480 GB	2	512 GB	2	M6	MM 62.5/125 μm	10	10 km	
						3	1 TB	3	S3	SM 1310 nm	30	30 km	
						4	2 TB	4	S5	SM 1550 nm	50	50 km	

Example: **LMS-41H-2334-S330-4-2U**

Xeon® processor D-1541; 480 GB M.2 NVMe; four 1 TB SSD; 128 GB RAM; SM 1310 nm, 30 km;
4 GbE ports (2x FO, 2x RJ45), 2U box

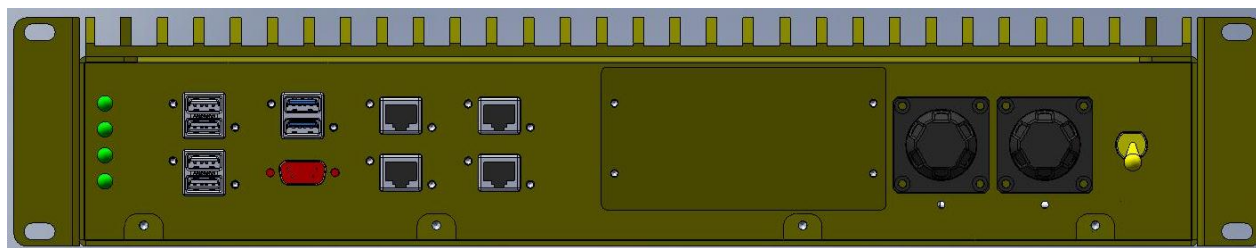
Optional Accessories

Power supply cable, connector DC 3 m:

- Power cable DC 3 m: LMCAB-PSC-03-D3 26WB2SN-DC
- Power supply connector set: LMCON-PSC-01

LAN – RJ-45 cable
VGA cable
USB2, USB3 cable
RS232 cable
HMA FO cable

Front panel description:



4x USB2

2x USB3
VGA

IPMI
RS232

2x GbE

4x removeable SSD

2x FO