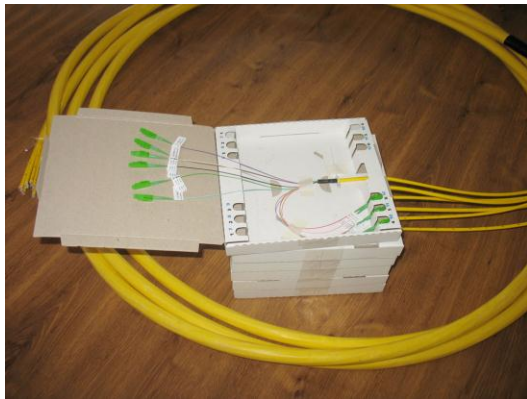


## MFP – Multifiber pigtail/patchcord

### Description:

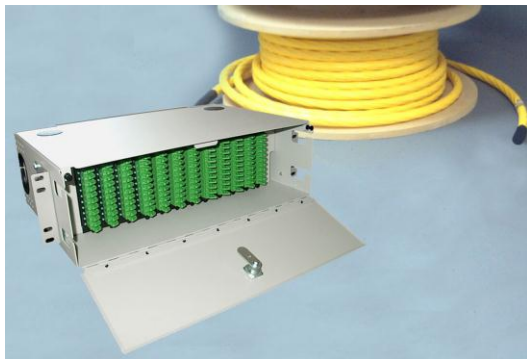
The MFP preterminated cable system is available in two different versions. Preterminated with different connector types the multifiber pigtail or patchcord can be delivered. The associated optical distribution frames are either completely assembled or have to be connected after the cable has been pulled in. Both versions are available for multimode or singlemode fibers and all connector types. The MFP is suitable for every type of building cabling topography and many external cabling applications.



72xNLX5-SU-72-S2D-P-012

### Features:

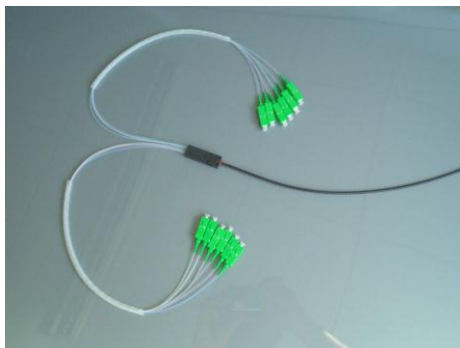
- Available SM and MM versions
- Various connector types
- Easy connection and disconnection
- No need splicing to install optical network
- Optical distribution frame could be included
- Low Insertion loss & Reflection
- Simple & Low cost
- 12 – 144 fibers capacity
- Sub Unitised distribution cable type (other on request)



144xNE2S-SU RM-144-S2D-P-1-200  
(including MCMH – 3U optical distribution frame)

### Application:

- Building cabling
- Outdoor cabling applications
- FTTH projects



12xNSC-SNAC-12-S2D-P-01-50



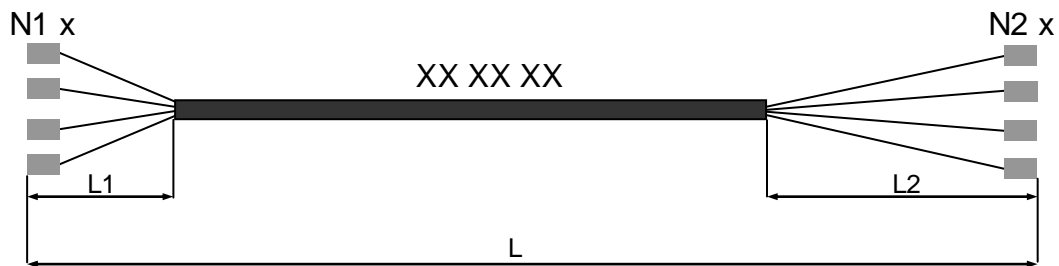
13xLCDU-SU-36-OM2-J-OG-0.3-5



### ODF variants:

Pigtail type:	Connector type:	
	FC, ST, DIN,	SC, LC, MU, LX.5, LSH (E2000)
	ODF type	
72 fibers	MCMH – 3U	MCMH – 3U
96 fibers		
144 fibers	MCMH – 6U	

### Ordering code:



**N1 x AAA - N2 x AAA - SU - XX - XX - Y - (CC)-L1-L2-L**

Connectors		
Small	LC	LC/PC
Form	ULC	LC/UPC
Factor	NLC	LC/APC
	MU	MU/PC
	UMU	MU/UPC
	NMU	MU/APC
	LX5	LX.5/PC
	NLX5	LX.5/APC
FC	PC	FC/PC
	UPC	FC/UPC
	NPC	FC/APC standard 2.05 mm
SC	SC	SC/PC
	USC	SC/UPC
	NSC	SC/APC
ST	SL	ST/PC
LSH	PE2	LSH (E2000)/PC
	UE2	LSH (E2000)/UPC
	NE2S	LSH(E2000)/APC standard
	NE2P	LSH(E2000)/APC premium
Ribbon	MPO4(8,12)	MPO for 4 (8,12) fibers-flat
	NMPO4(8,..)	MPO-angled
	MPX4(8,12)	MPX for 4 (8,12) fibers-flat
	NMPX4(8,..)	MPX-angled
Duplex	MJF	MT/RJ - w ithout pins
	MJM	MT/RJ - w ith guide pins

**L - length in [m]** (0-999)\*  
\*) min. L1, L2 – 0.3 m,

**Y Type (pigtail or jumper)**  
**JC** jumper crossed  
**J** jumper straight  
**P** pigtail

**XX Fiber Type**  
**S2D** 9/125 µm, G.652D  
**S5X<sup>1</sup>** 9/125 µm, G.655X  
**S7X<sup>1</sup>** 9/125 µm, G.657X  
**OM1** 62,5/125 µm  
**OM2** 50/125 µm  
**OM3** 50/125 µm  
**OM4** 50/125 µm  
<sup>1)</sup> X – according fiber subtypes (e.g. G.655C)

**XX – Number of fibers** (2 ... 144)




**XX** Cable type  
**SU** Sub Utilised Distribution Cable  
**MT** Multi Purpose Tight Buffered Cable, LZSH  
**MB** Multi Purpose Break-Out Cable, LZSH  
**MU** Multi Purpose Uni Tube Cable, LZSH  
**ML** Multi Purpose Loose Tube Cable, LZSH  
**UT** Uni Tube Cable, PE  
**LT** Loose Tube Cable, PE  
**R** Ribbon Cable  
**TN** TuffNut™ cable Ø 3 mm  
**SU RM** SU cable + MCMH optical distribution frame  
**SNAC** SNAC™ Connector Join Housing System

### (CC) Color code:

BK	BN	RD	OG	YE	GN	BU	VT	GY	WH	PK	TQ
Black	Brown	Red	Orange	Yellow	Green	Blue	Violet	Grey	White	Pink	Turquoise

**Note:** Other connector and cable types on request

Detailed description of basic types

Fanout type	Dimensions (ø x length)	Tensile strength	Material	Overview
FNO-01	ø22.5 x 80 mm	100 N	metal gland, plastic gland PG 9, plastic tube, heat shrink tube	
FNO-03	ø10 x 60 mm	100 N	aluminum tube covered by heat shrink tube	
FNO-10	ø35 x 60 mm	100N	plastic glands - PG 13.5 / M25 x 1.5, heat shrink tube	

Note: Dimensions, diameters and glands of tubes may be changed according to numbers of output and their diameters. Other construction available on request.